

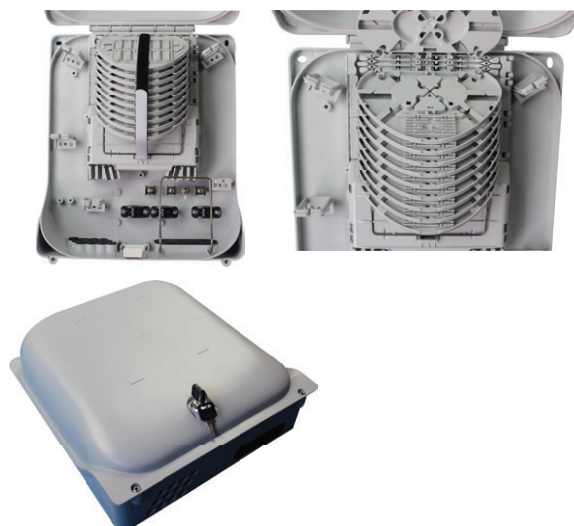
## TB-X48B Termination Box

### Features

- ✓ Outdoor use
- ✓ Designed for Wall and Pole mount applications
- ✓ Safety lock
- ✓ IP 65
- ✓ Accepts loose tube, distribution cables
- ✓ Bend radius protection
- ✓ Rugged and durable construction for long term reliability (UV resistance)
- ✓ Resistance to vibration and shock
- ✓ Door with secure mechanism
- ✓ Can accommodate up to many pieces 1 x 8 or 1 x 16 PLC Splitter
- ✓ Up to 48 drop cables
- ✓ Design for small and medium volumes of fiber optic cables
- ✓ Max. 120 fibers(10 pcs of SE trays ) Max. 80 fibers(20 pcs of SC trays )

### Applications

- ✓ Telecommunications Networks
- ✓ FTTH Access Networks
- ✓ CATV Networks
- ✓ Local Area Networks
- ✓ Data communication Networks
- ✓ Outdoor Applications



### Specifications & Ordering Information

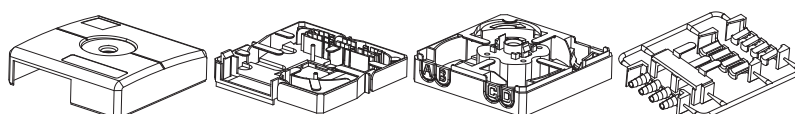
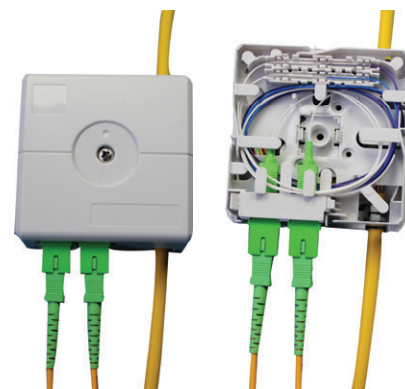
Order No	Dimensions LxWxH(mm)	Cable Ports	Spliced Fiber Storage Capacity
ALF-TB-X48B	398x327x118	The oval port is for 1 loop cable or 2 cables with max 20 mm The reserved port is for cables with max 18 mm The twelve ports with diameter 14 mm each port can hold 4 drop cables, totally 48 drop cables	120 Splices(10 pcs of SE trays: 10x12 Splices) 80 Splices(20 pcs of SC trays: 20x4 Splices)

## TB-X50 Termination Box

The TB-X50 is a small size indoor fiber distribution box to allow to break out fibers from a riser cable to individual drop cable that bring the fiber from this point to the living units of an MDU. The TB-X50 is designed for riser cables that allow access through a small window cut or incision. For cable constructions that require larger window cuts, fiber overlength can be stored in the base module. To connect the drop fibers to the riser fibers both splices and connector can be used. The splice capacity of the TB-X50 splice module is 4 splices.

### Features

- ✓ Very compact enclosure with dimensions (WxHxD): 80mm x 80mm x 35mm for integration into small sized floor boxes
- ✓ Window cuts as small as 50mm possible with specific cable constructions such as the Mini-breakout cable
- ✓ Drop cables can be directed to 4 different sides by rotating the splice module on the base module
- ✓ Free breathing enclosure for indoor use
- ✓ Front accessible
- ✓ Wrap around riser cable installation
- ✓ Not required to cut loop-through fibers from riser cable
- ✓ Can hold 4 LC connectors or 2 SC connectors
- ✓ Compatible with mechanical splice, heat shrink protectors in the same splice holder
- ✓ Drop cable diameter up to 5mm
- ✓ Main cable diameter up to 10,5mm



### Specifications & Ordering Information

Order No	Dimensions LxWxH(mm)	Cable Ports	Spliced Fiber Storage Capacity	Description
ALF-TB-X50-NN	80x80x35	Main Cable port ( for cables up to 10.5 mm) Drop cable port( for Dropcable up to 5 mm)	Up to 4 Splices	Without connectors, splices with 4 drop cables directly
ALF-TB-X50-2SC				Can hold 2 SC Simplex Adaptors
ALF-TB-X50-4LC				Can hold 2 LC Duplex Adaptors