

# SwingSystem

## 2RU Fiber Termination Patch/Splice Panel

Alfafonet offers an innovative, high density swing panel has been designed to accept up to 96 fibres housed within a 2RU space. The tray fully manages the incoming fibres, pigtails and splices. The panel swing can pivot by up to 120° to allow easy access during installation or rework with no disturbance of the existing cable or fibres. Angled adaptors route exiting patch cords directly into the cabinet side management. The panel can be assembled to swing in either direction, facilitating cable entry from either side.

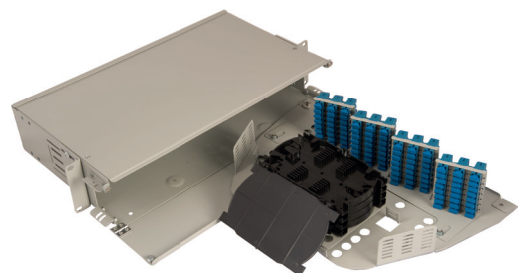
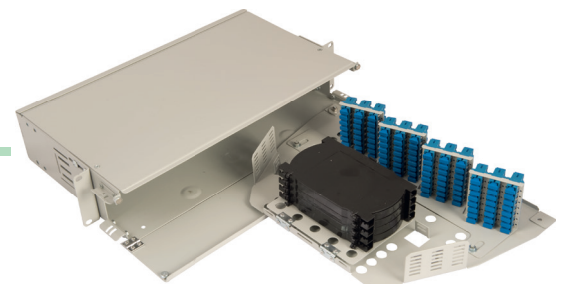


### Features

- ✓ Swing tray gives full access to adaptors and fibres whilst managing incoming cable length
- ✓ Angled adaptor plates direct patch cords to side management behind openable front label plate
- ✓ Suitable for up to 4 incoming cables
- ✓ Tray can be assembly left or right handed, and recessed or set forward to accommodate different racks
- ✓ Accepts loose tube, distribution and pre-terminated cables.
- ✓ Optional splice tray kit for on site conversion to patch and splice panel

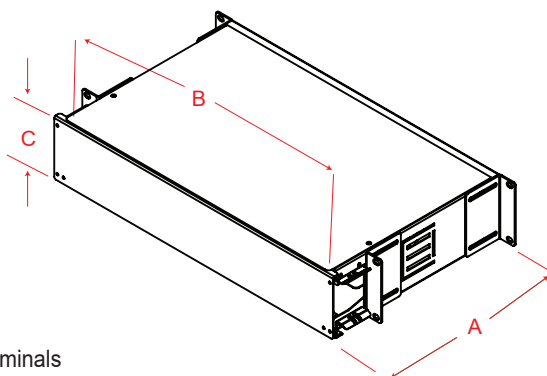
### Specifications

- ✓ Cold rolled steel
- ✓ Durable textured powder coat finish available in black or white
- ✓ Universal 19/21" EIA/TIA rack compatibility
- ✓ Standard density: up to 48 fiber, High density: up to 96 fiber
- ✓ Front and back side mounting options
- ✓ Standard cable stub location is leftside
- ✓ Optional cable stub location is rear



### Applications

- ✓ Telecommunications closets
- ✓ Data Centers
- ✓ Customer Premise
- ✓ LAN / WAN Networks
- ✓ Central Offices / Headends
- ✓ Hubs / Cabinets / Remote Terminals
- ✓ FTTH / FTTB Networks

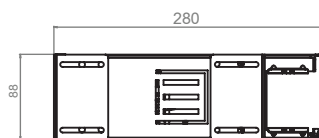


### Dimensions

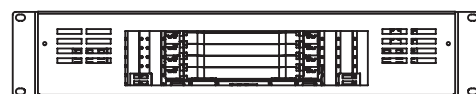
DEPTH A (mm)	WIDTH B (mm)	HEIGHT C (mm)	RACK UNITS	CAPACITY	UNLOADED WEIGHT
280	430	88	2	48/72/96	5 kg



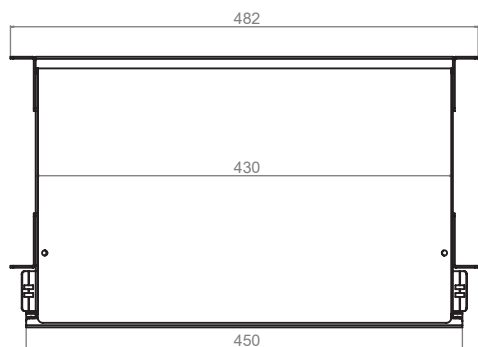
FRONT VIEW



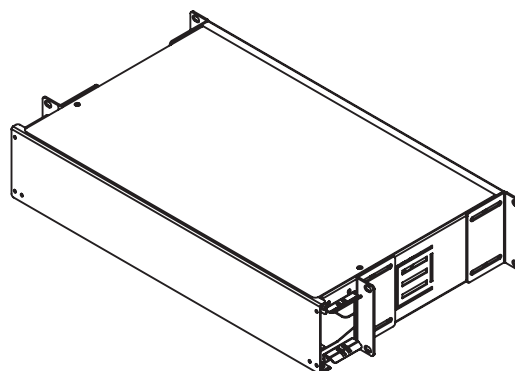
SIDE VIEW



BACK VIEW

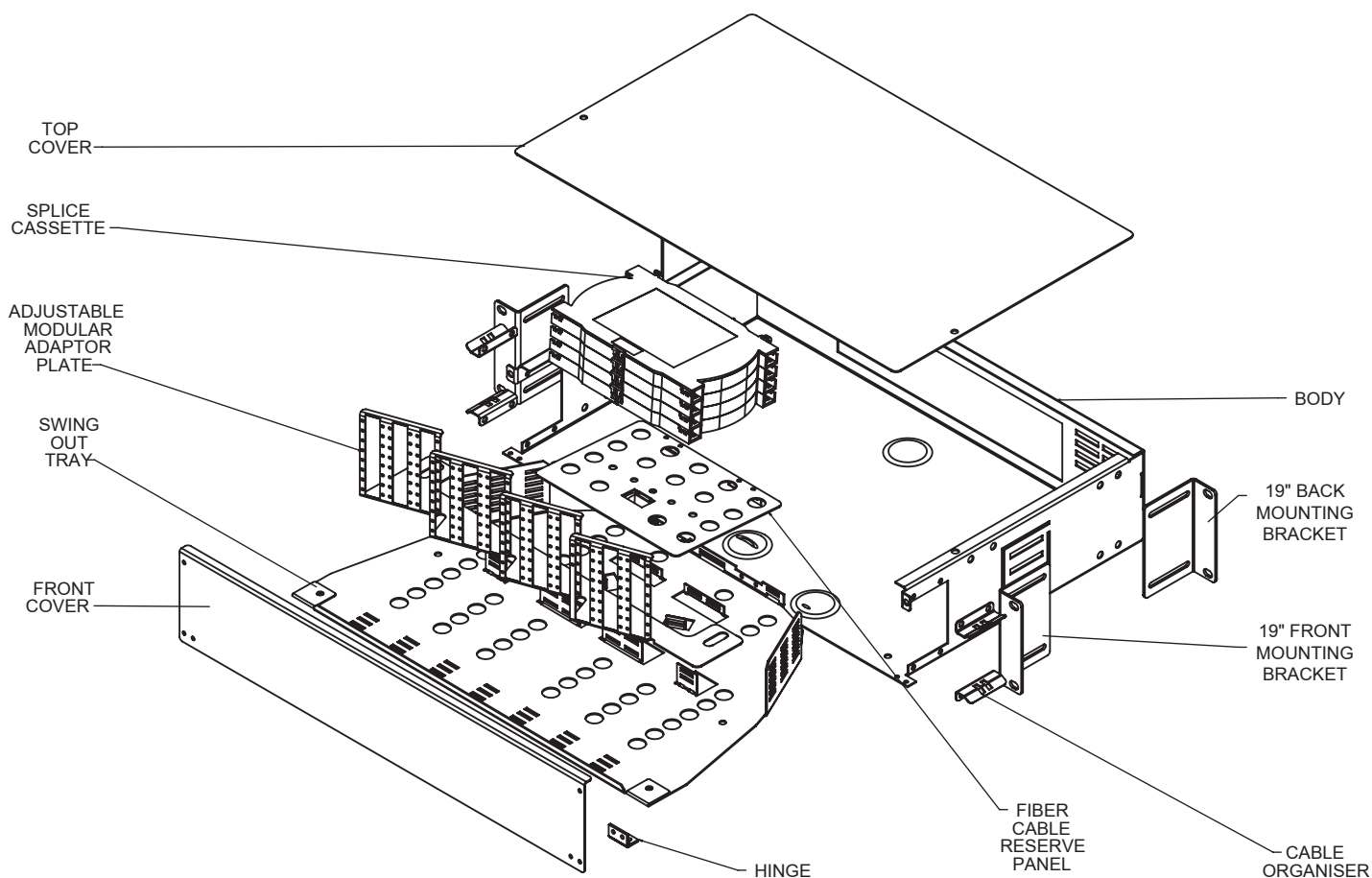


TOP VIEW

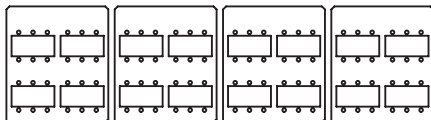
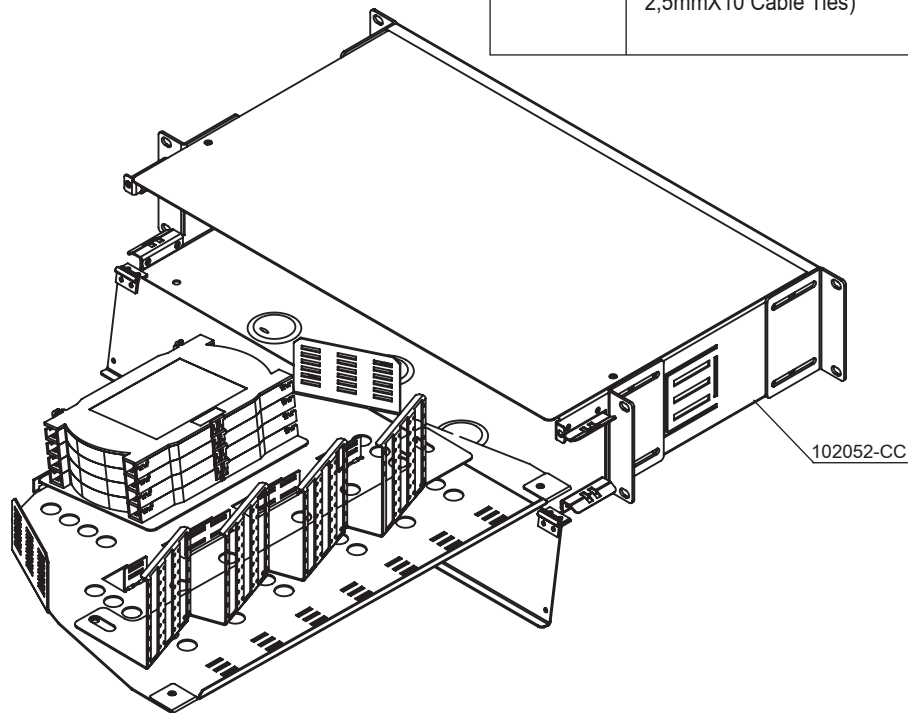


ISOMETRIC VIEW

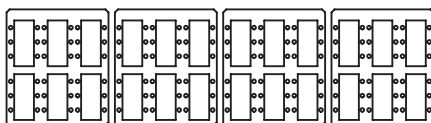
## EXPLODED VIEW



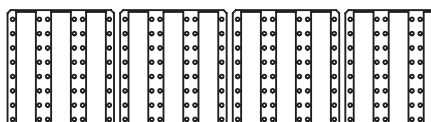
Order No*	Product Definition
102052-CC	SwingSystem 2RU Fibre Optic Termination Panel, 19" Rotatable Swing Type without front plate, Colour: Black-RAL9005 or Light Grey-RAL7035, ( 2pcs. 50 cm Plastic Spiral Tube Ø13mm, 4pcs. Adhesive Bunny Clips, 8pcs. 2,5mmX10 Cable Ties)



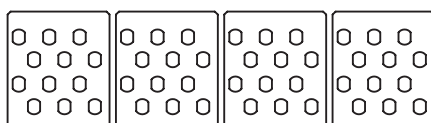
48 LC Duplex or 48 E2000 or 48 SC Simplex  
2RU Angled Front Plate



72 E2000 or 72 SC Simplex 2RU Angled Front Plate



96 E2000 or 96 SC Simplex 2RU Angled Front Plate



48 ST or 48 FC (D-Hole) Horizontally Shifted  
2RU Angled Front Plate

Order No*	SwingSystem 2RU Front Plate Options
102052.01-CC	48 LC Duplex or 48 E2000 Simplex or 48 SC Simplex 2RU Angled Front Plate
102052.02-CC	72 E2000 Simplex or 72 SC Simplex 2RU Angled Front Plate
102052.03-CC	96 E2000 Simplex or 96 SC Simplex 2RU Angled Front Plate
102052.04-CC	48 ST or 48 FC (D-hole) Horizontally Shifted 2RU Angled Front Plate

#### Ordering Information

\* CC=LG for Light Grey RAL 7035 & BL for Black RAL 9005 for customers to define while ordering.