

SC-502 Fiber Optic Splice Closure

Features

- ✓ May be used for cut, uncut and taut sheath applications
- ✓ May be used for all fiber optic cable.
- ✓ Sheath retention & central strength member fasten system included
- ✓ Ribbed closure construction and lightweight plastic provides strength and resistance to chemical and U.V attack
- ✓ Installation and re-entry with a minimum of tools
- ✓ Re-enterable and re-usable
- ✓ All hardware are included
- ✓ Protection class: IP68
- ✓ RoHS compliance

Application

Underground, Aerial, Vault, Pole Mounting and Wall Mountable



Specifications & Ordering Information

Order No	Dimensions LxWxH(mm)	Spliced Fiber Storage Capacity	Cable Ports	Max. Diameter of Cable(mm)	Adaptor Capacity
ALF-SC-502	323X202X86	48 splices(4x12 splices)	6 ports	6 ports : 2 ports;each port for 1 cable with max 20 mm. 2 ports;each port for 1 cable with max. 16 mm. 2 ports;each port for 1 cable with max. 13 mm.	8 SC simplex or 8 LC duplex adaptors

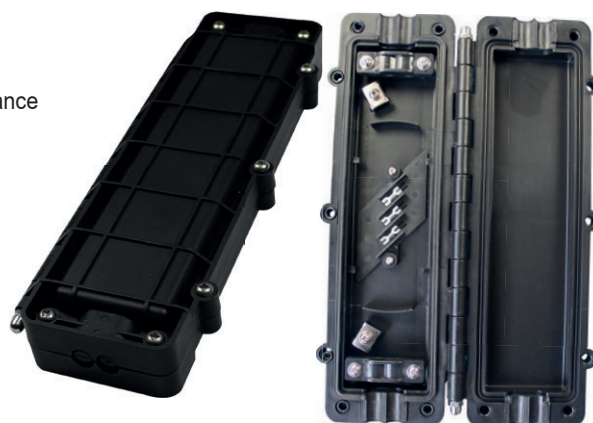
SC-F01 FTTH Compact Closure

Features

- ✓ Compact design for FTTH application
- ✓ Hinged structure
- ✓ Sheath retention & central strength member fasten system included
- ✓ Ribbed closure construction and lightweight plastic provides strength and resistance to chemical and U.V attack
- ✓ Installation and re-entry with a minimum of tools
- ✓ All hardware are included
- ✓ RoHS compliance

Application

Underground, Aerial , Duct, Wall Mounting



Specifications & Ordering Information

Order No	Dimensions LxWxH(mm)	Spliced Fiber Storage Capacity	Cable Ports	Max. Diameter of Cable(mm)	Material
ALF-SC-F01	300x107x38	12 splices	4 ports	4 ports: each port for 1 cable with max 10 mm.	MPP