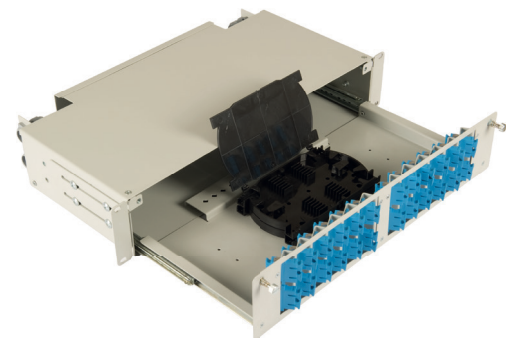
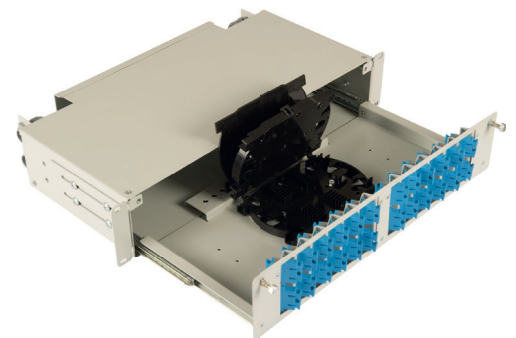
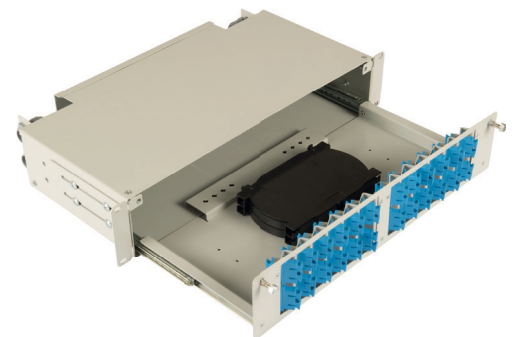


RailSystem Angled

2RU Fiber Termination Patch/Splice Panel

The RailSystem Angled 2RU Fiber Termination Patch/Splice Panel is designed for professional and advanced cable management with 45 degree adaptor interface. This solution allows for easy access to the front patch cords as well as the splice trays and pigtails after being pulled out. Mounted on telescopic runners to ensure the tray slides in and out with a smooth action. Standard panels are available empty for complete field configuration, half-loaded with adaptor plates for field termination and cable assembly installation, or stubbed with a factory-installed cable assembly of a user specified length. The panel also offers multiple cable entry solutions, up to 2 standard cable entry points for, loose tube, tight buffer, preterminated and steel tape armoured cable. Each panel has integrated strength member tie positions.



Features

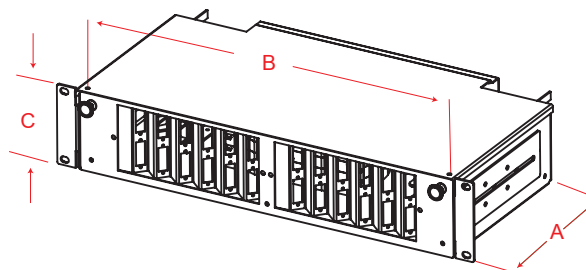
- ✓ Accepts loose tube, distribution and pre terminated cables
- ✓ Up to 48 fibres in 2RU
- ✓ Changeable adaptor plates
- ✓ Pulled-open front pulled-out tray
- ✓ Optional splice tray kit for on site conversion to patch and splice panel

Specifications

- ✓ Cold Rolled Steel
- ✓ Durable textured powder coat finish available in black or white
- ✓ Universal 19/21" EIA/TIA rack compatibility
- ✓ Front and back side mounting options
- ✓ Standard cable stub location is left/right side

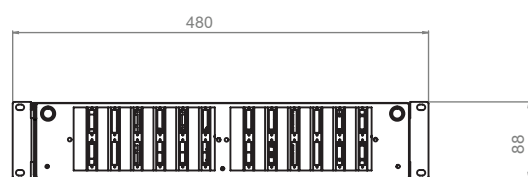
Applications

- ✓ Telecommunications closets
- ✓ Data Centers
- ✓ Customer Premise
- ✓ LAN / WAN Networks
- ✓ Central Offices / Headends
- ✓ Hubs / Cabinets / Remote Terminals
- ✓ FTTH / FTTB Networks

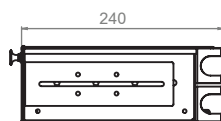


Dimensions

DEPTH A (mm)	WIDTH B (mm)	HEIGHT C (mm)	RACK UNITS	CAPACITY	UNLOADED WEIGHT
240	430	88	2	24/48	4,8 kg



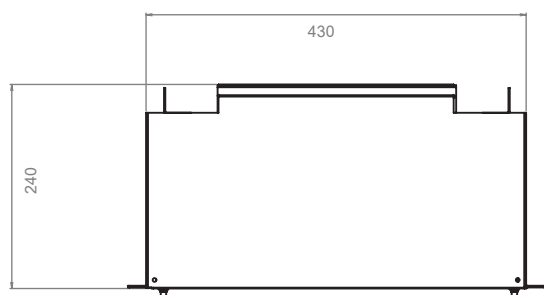
FRONT VIEW



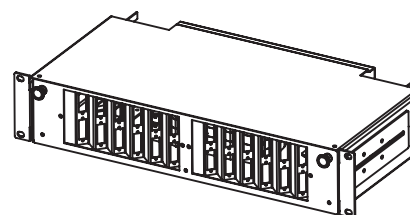
SIDE VIEW



BACK VIEW

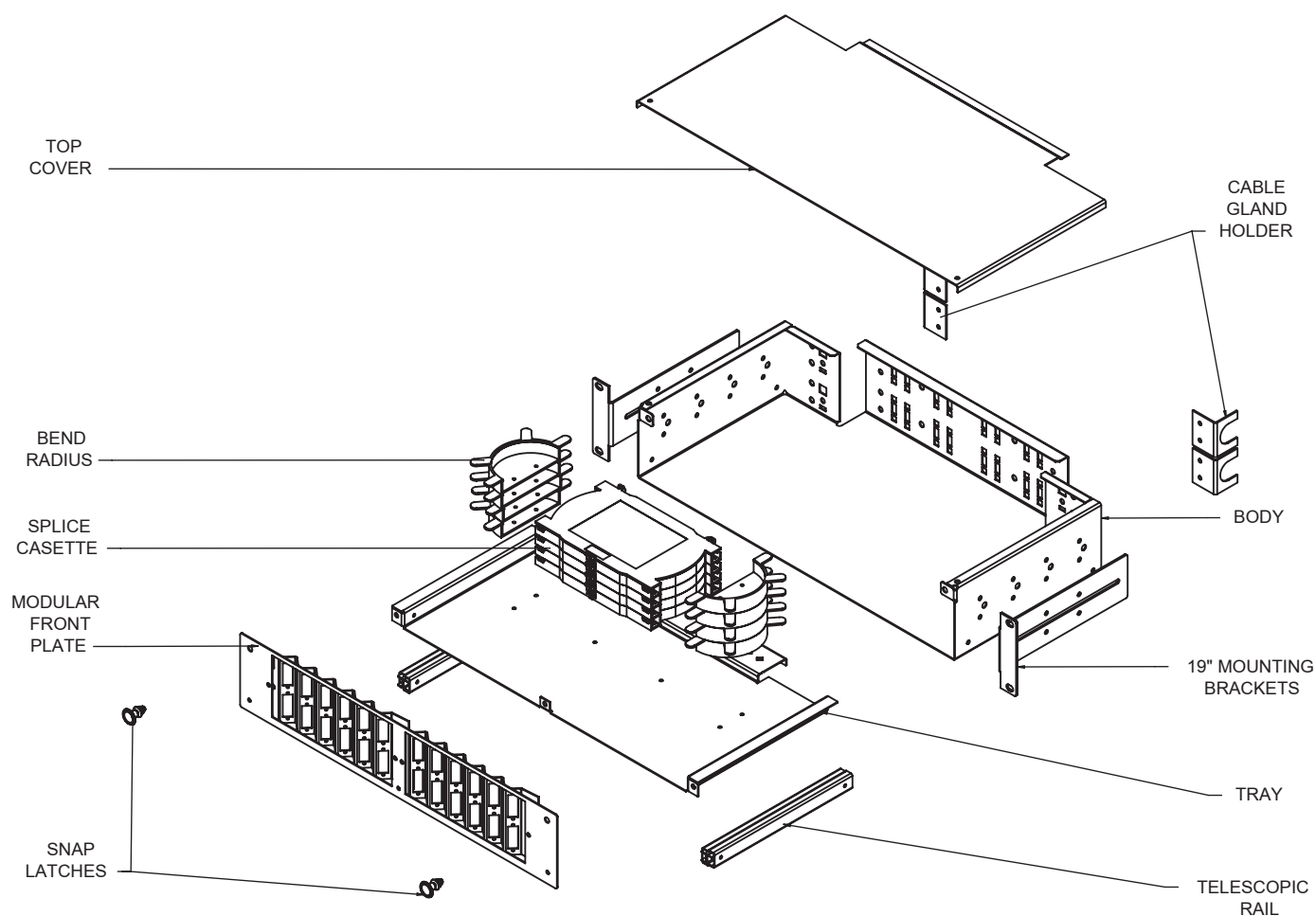


TOP VIEW

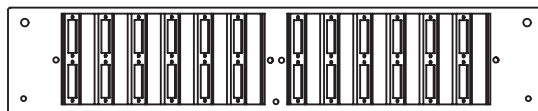
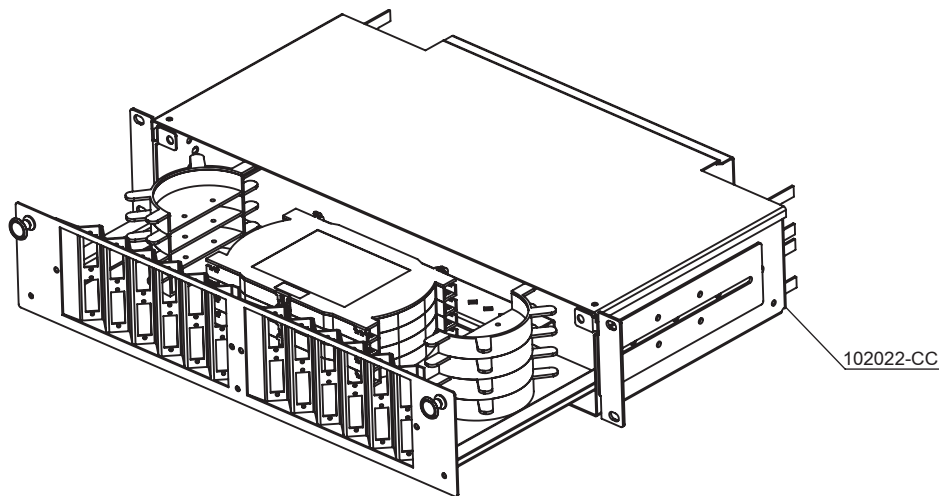


ISOMETRIC VIEW

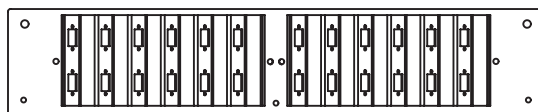
EXPLODED VIEW



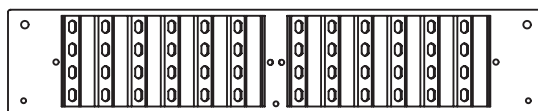
Order No*	Product Definition
102022-CC	RailSystem Angled 2RU Fibre Optic Termination Plate, 19"- Sliding with Telescopic Rails, without front plate, Colour: Black-RAL9005 or Light Grey-RAL7035, (2pcs. PG16 Plastic Gland, 2pcs. 50 cm Plastic Spiral Tube Ø13mm, 8pcs. 2,5mmX10 Cable Ties, 2pcs. Plastic Snap Latches, 8pcs. Plastic Half Round Spools for Bend Radius)



24 SC Duplex Vertical 2RU Angled Front Plate



24 LC Duplex or 24 E2000 Simplex or 24 SC Simplex Vertical 2RU Angled Front Plate



48 ST or 48 FC (D-hole) Vertical 2RU Angled Front Plate

Order No*	RailSystem Angled Front Plate Options
102022.01-CC	24 SC Duplex Vertical 2RU Angled Front Plate
102022.02-CC	24 LC Duplex or 24 E2000 Simplex or 24 SC Simplex 2RU Angled Front Plate
102022.03-CC	48 ST or 48 FC (D-hole) 2RU Angled Front Plate

Ordering Information

* CC=LG for Light Grey RAL 7035 & BL for Black RAL 9005 for customers to define while ordering