

RailSystem Angled

1RU Fiber Termination Patch/Splice Panel

The RailSystem Angled 1RU Fiber Termination Patch/Splice Panel is designed for professional and advanced cable management with 45 degree adaptor interface. This solution allows for easy access to the front patch cords as well as the splice trays and pigtails after being pulled out. Mounted on telescopic runners to ensure the tray slides in and out with a smooth action. Standard panels are available empty for complete field configuration, half-loaded with adaptor plates for field termination and cable assembly installation, or stubbed with a factory-installed cable assembly of a user specified length. The panel also offers multiple cable entry solutions, up to 2 standard cable entry points for, loose tube, tight buffer, preterminated and steel tape armoured cable. Each panel has integrated strength member tie positions.

Features

- ✓ Accepts loose tube, distribution and pre terminated cables
- ✓ Up to 24 fibres in 1RU
- ✓ Changeable adaptor plates
- ✓ Pulled-open front pulled-out tray
- ✓ Optional splice tray kit for on site conversion to patch and splice panel

Specifications

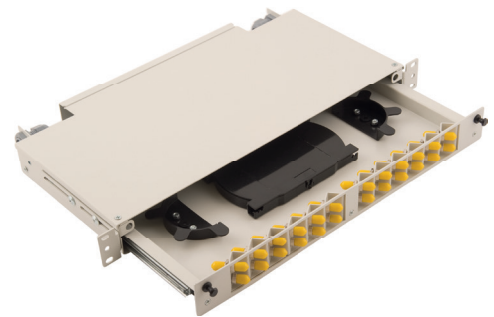
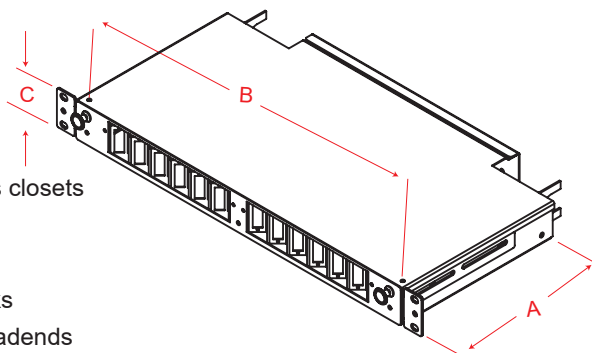
- ✓ Cold Rolled Steel
- ✓ Durable textured powder coat finish available in black or white
- ✓ Universal 19/21" EIA/TIA rack compatibility
- ✓ Front and back side mounting options
- ✓ Standard cable stub location is left/right side

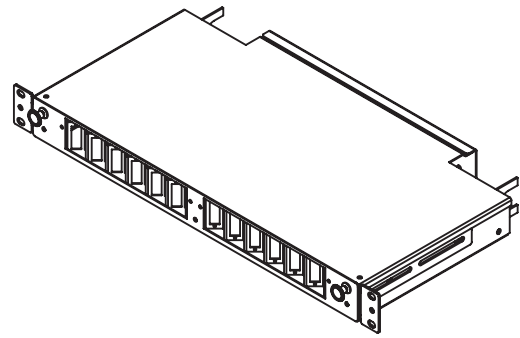
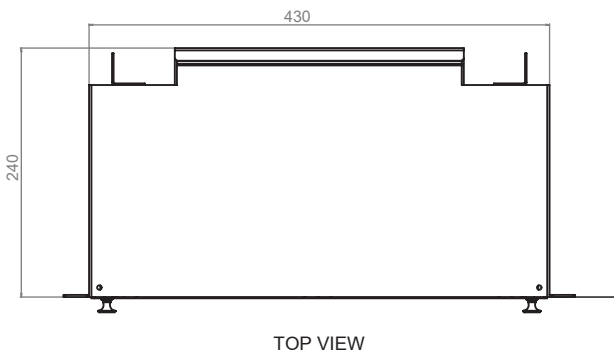
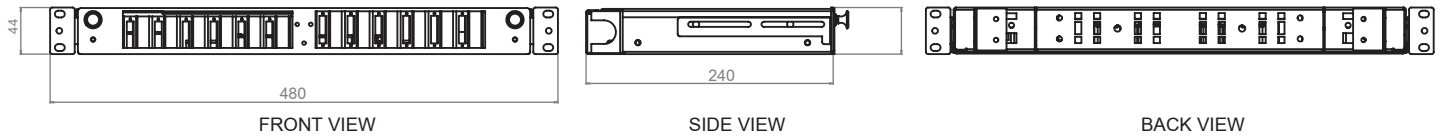
Applications

- ✓ Telecommunications closets
- ✓ Data Centers
- ✓ Customer Premise
- ✓ LAN / WAN Networks
- ✓ Central Offices / Headends
- ✓ Hubs / Cabinets / Remote Terminals
- ✓ FTTH / FTTB Networks

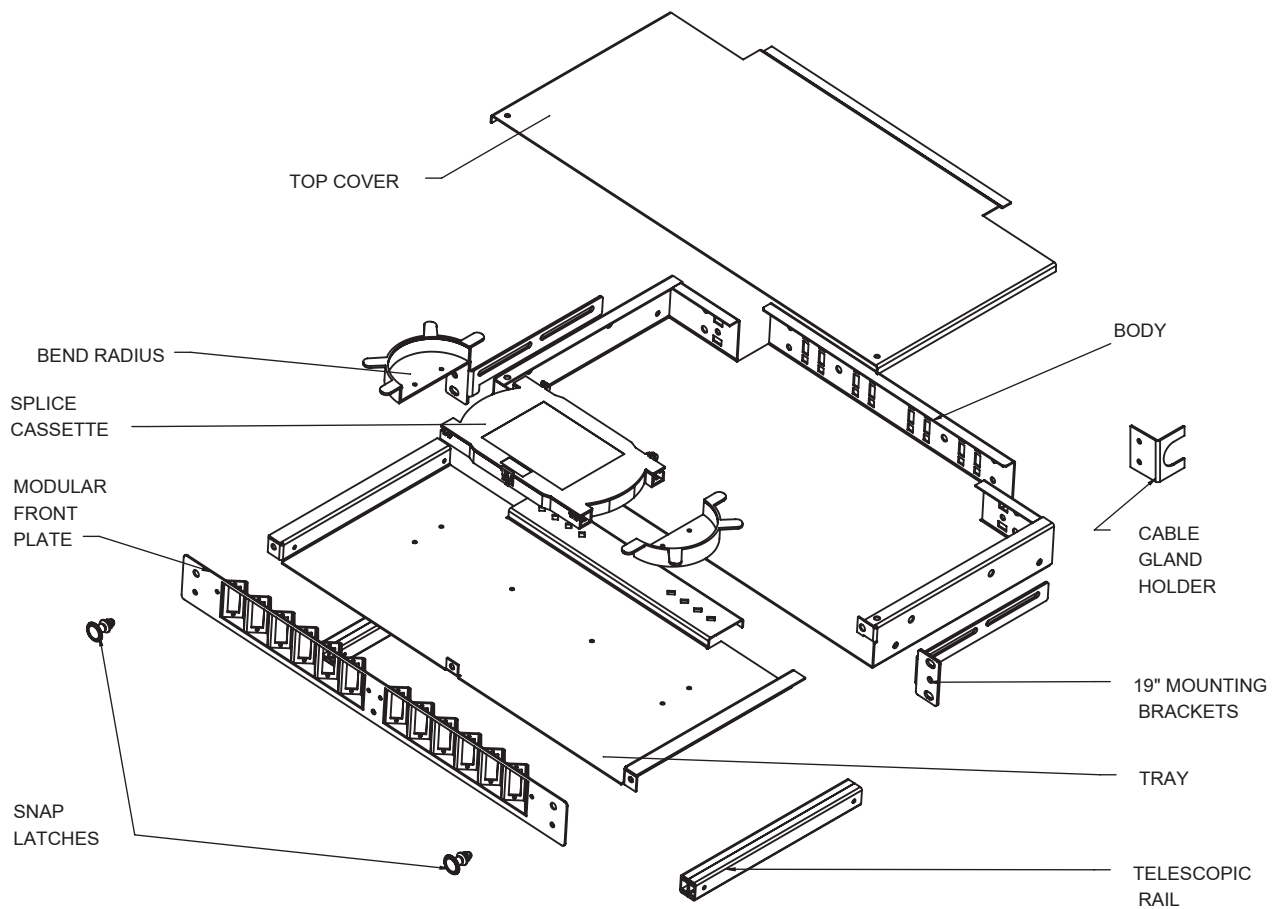
Dimensions

DEPTH A (mm)	WIDTH B (mm)	HEIGHT C (mm)	RACK UNITS	CAPACITY	UNLOADED WEIGHT
240	430	44	1	12/24	4 kg

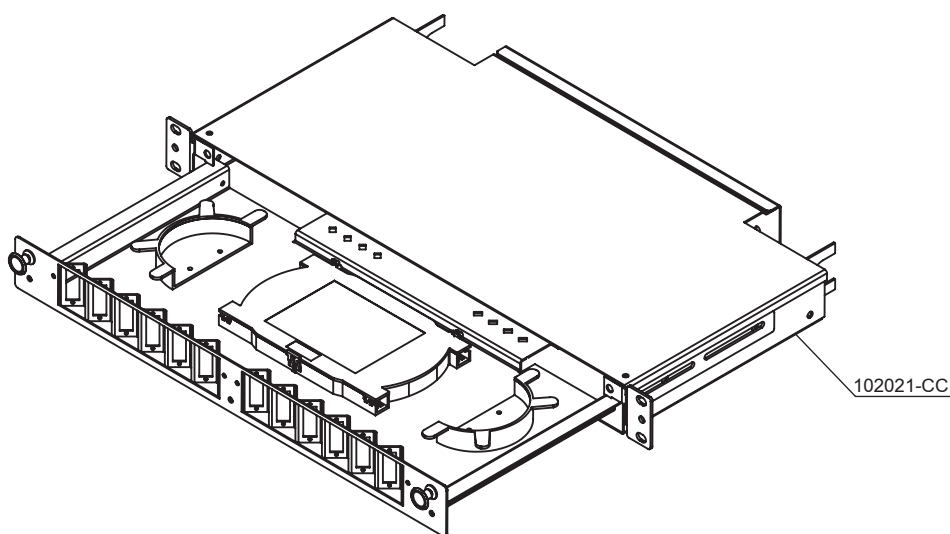




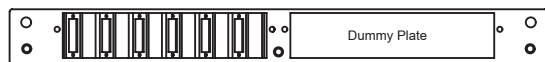
EXPLODED VIEW



Order No*	Product Definition
102021-CC	RailSystem Angled 1RU Fibre Optic Termination Panel, 19" - Sliding with Telescopic Rails, without front plate, Colour: Black-RAL9005 or Light Grey-RAL7035, (1pcs. PG16 Plastic Gland, 1pcs. 50 cm Plastic Spiral Tube Ø13mm, 4pcs. 2,5mmX10 Cable Ties, 2pcs. Plastic Snap Latches, 4pcs. Plastic Half Round Spools for Bend Radius)



12 SC Duplex Vertical 1RU Angled Front Plate



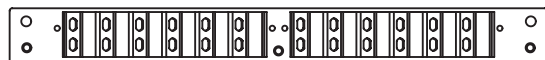
6 SC Duplex Vertical 1RU Angled Front Plate



12 LC Duplex or 12 E2000 Simplex or 12 SC Simplex Vertical 1RU Angled Front Plate



6 LC Duplex or 6 E2000 Simplex or 6 SC Simplex Vertical 1RU Angled Front Plate



24 ST or FC (D-hole) 1RU Angled Front Plate



12 ST or FC (D-hole) 1RU Angled Front Plate

Order No*	RailSystem Angled 1RU Front Plate Options
102021.01-CC	12 SC Duplex Vertical 1RU Angled Front Plate
102021.02-CC	6 SC Duplex Vertical 1RU Angled Front Plate
102021.03-CC	12 LC Duplex or 12 E2000 Simplex or 12 SC Simplex 1RU Angled Front Plate
102021.04-CC	6 LC Duplex or 6 E2000 Simplex or 6 SC Simplex 1RU Angled Front Plate
102021.05-CC	24 ST or 24 FC (D-hole) 1RU Angled Front Plate
102021.06-CC	12 ST or 12 FC (D-hole) 1RU Angled Front Plate

Ordering Information

* CC=LG for Light Grey RAL 7035 & BL for Black RAL 9005 for customers to define while ordering.