

# RailSystem

## 1RU Fiber Termination Patch/Splice Panel

The RailSystem 1RU Fiber Termination Patch/Splice Panel is designed for use as a rack mount interconnect point where termination and connectivity of up to 48 fibers is desired. This solution allows for easy access to the front patch cords as well as the splice trays and pigtails after being pulled out. Mounted on telescopic runners to ensure the tray slides in and out with a smooth action. Standard panels are available empty for complete field configuration, half-loaded with adaptor plates for field termination and cable assembly installation, or stubbed with a factory-installed cable assembly of a user specified length. The panel also offers multiple cable entry solutions, up to 2 standard cable entry points for, loose tube, tight buffer, preterminated and steel tape armoured cable. Each panel has integrated strength member tie positions.

### Features

- ✓ Accepts loose tube, distribution and pre terminated cables
- ✓ Changeable adaptor plates
- ✓ Plastic lock for fixing the tray
- ✓ Pulled-open front pulled-out tray
- ✓ Optional splice tray kit for on site conversion to patch and splice panel

### Specifications

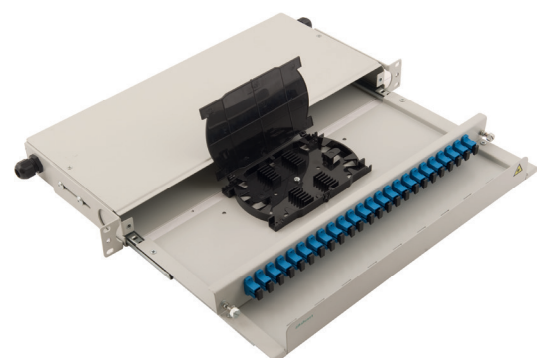
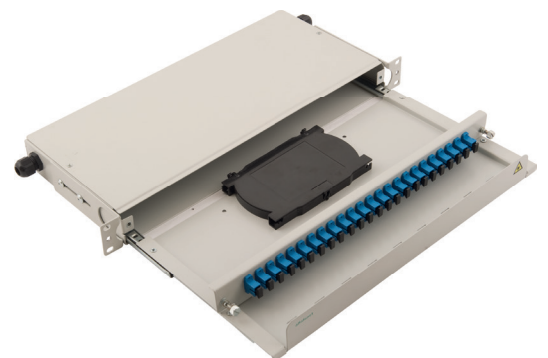
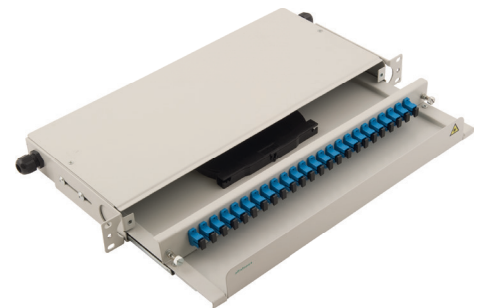
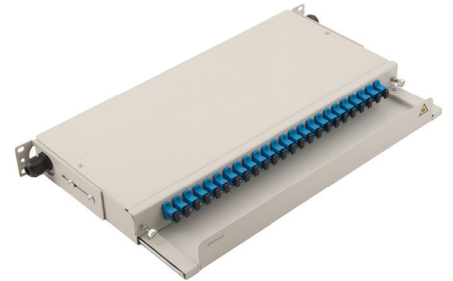
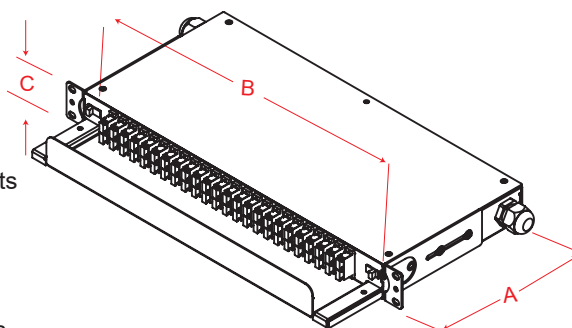
- ✓ Cold Rolled Steel or Aluminium
- ✓ Durable textured powder coat finish available in black or white
- ✓ Universal 19/21" EIA/TIA rack compatibility
- ✓ Front cable manager for patch cords
- ✓ Front and back side mounting options
- ✓ Standard cable stub location is left/right side
- ✓ Optional cable stub location is rear

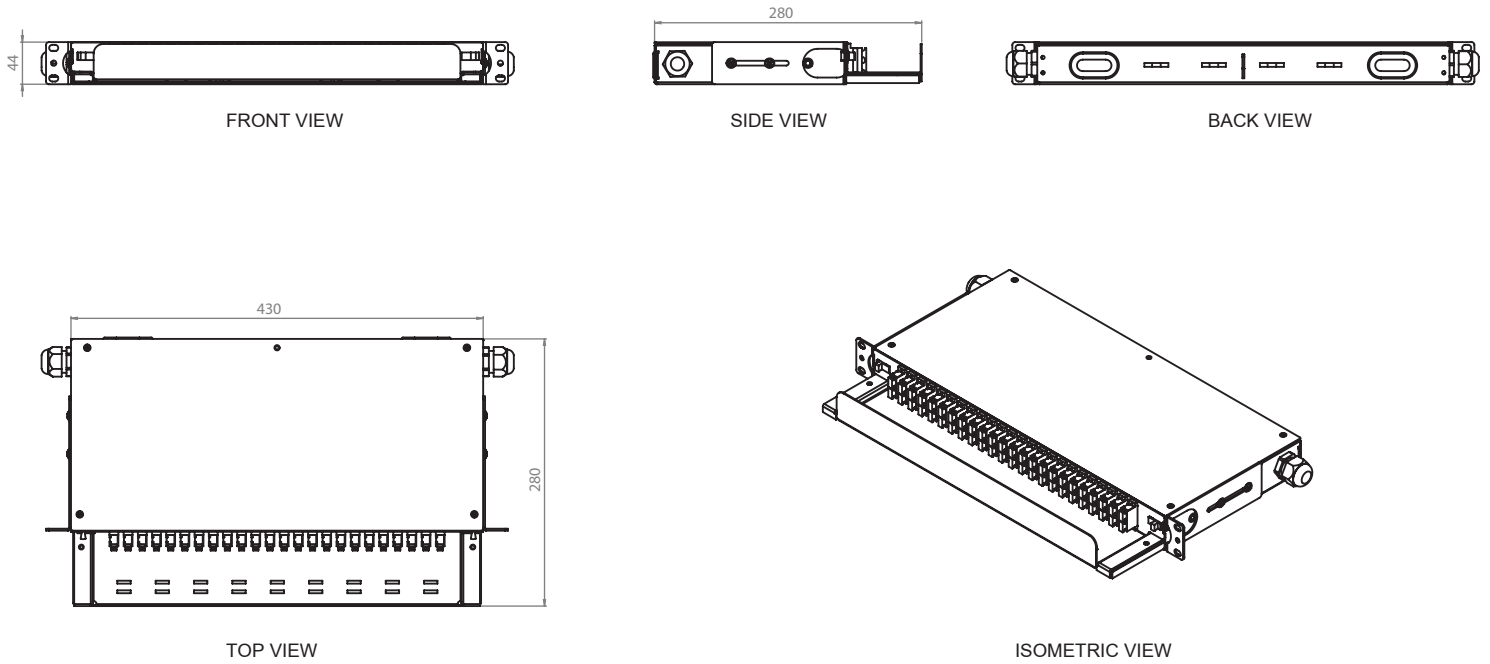
### Applications

- ✓ Telecommunications closets
- ✓ Data Centers
- ✓ Customer Premise
- ✓ LAN / WAN Networks
- ✓ Central Offices / Headends
- ✓ Hubs / Cabinets / Remote Terminals
- ✓ FTTH / FTTB Networks

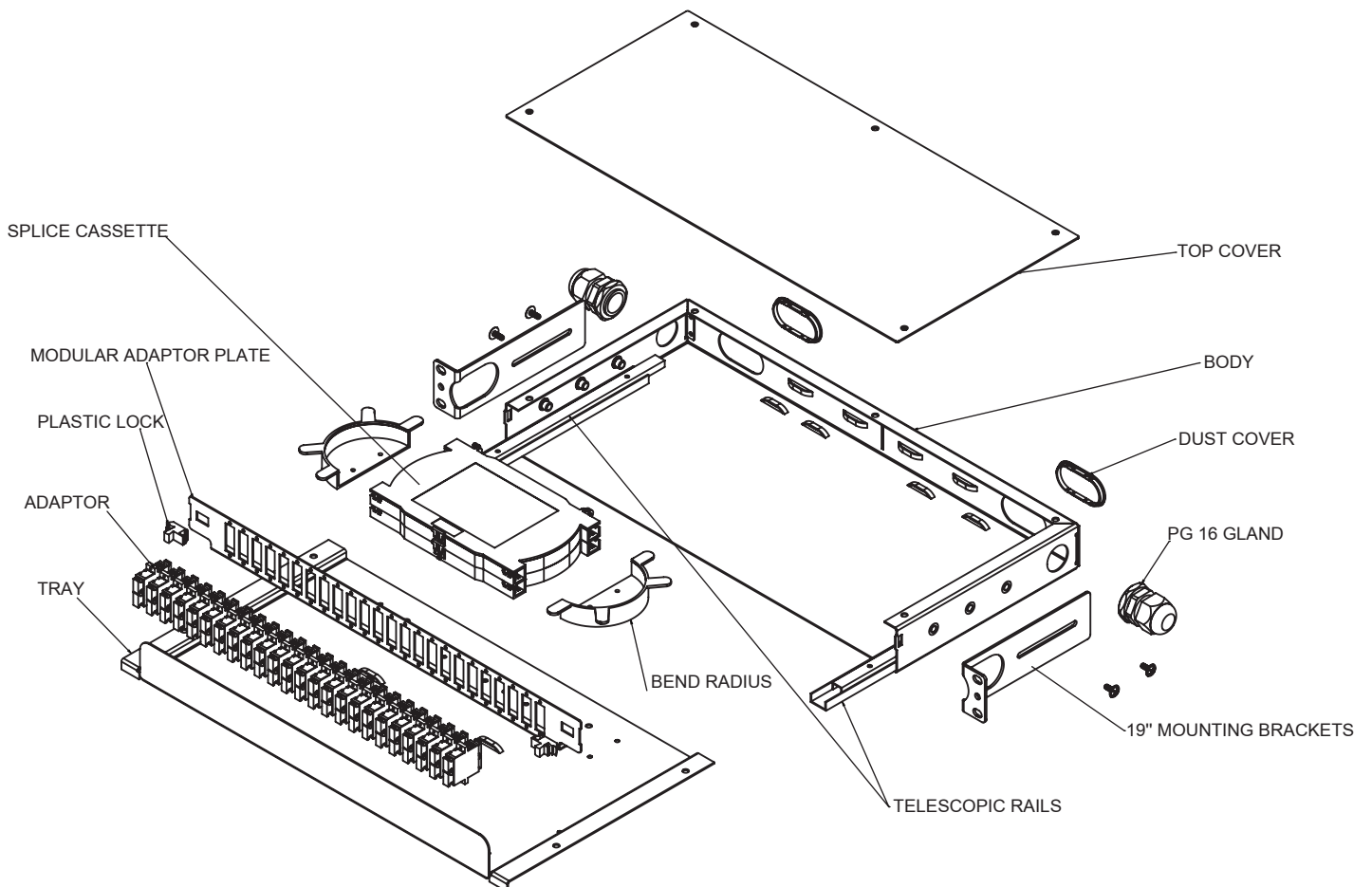
### Dimensions

DEPTH A (mm)	WIDTH B (mm)	HEIGHT C (mm)	RACK UNITS	CAPACITY	UNLOADED WEIGHT
280	430	44	1	24/48	3,7 kg

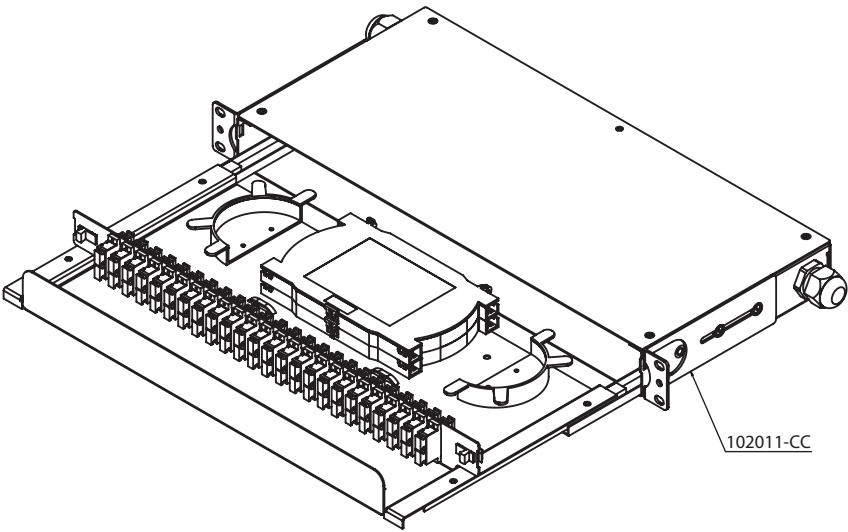




## EXPLODED VIEW



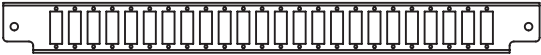
Order No*	Product Definition
102011-CC	RailSystem 1RU Fibre Optic Termination Panel, 19" - Sliding with Telescopic Rails, without front plate, Colour: Black-RAL9005 or Light Grey-RAL7035,(1pcs. PG16 Plastic Gland, 1pcs. 50cm Spiral Wrap Ø8mm,4pcs. Plastic Half Round Spools for Bend Radius, 2pcs. Plastic Dust Cover for Cable Entries , 4pcs. 2,5mmX10 Cable Ties)



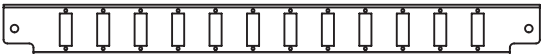
24 ST or FC (D-hole) 1RU Front Plate



12 ST or FC (D-hole) 1RU Front Plate



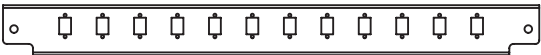
24 SC Duplex Vertical 1RU Front Plate



12 SC Duplex Vertical 1RU Front Plate



24 LC Duplex, E2000 Simplex, SC Simplex 1RU Front Plate



12 LC Duplex, E2000 Simplex, SC Simplex 1RU Front Plate

Order No*	RailSystem 1RU Front Plate Options
102011.01-CC	24 ST or 24 FC (D-hole) 1RU Front Plate
102011.02-CC	12 ST or 12 FC (D-hole) 1RU Front Plate
102011.03-CC	24 SC Duplex Vertical 1RU Front Plate
102011.04-CC	12 SC Duplex Vertical 1RU Front Plate
102011.05-CC	24 LC Duplex or 24 E2000 Simplex or 24 SC Simplex 1RU Front Plate
102011.06-CC	12 LC Duplex or 12 E2000 Simplex or 12 SC Simplex 1RU Front Plate

Ordering Information

\* CC=LG for Light Grey RAL 7035 & BL for Black RAL 9005 for customers to define while ordering.