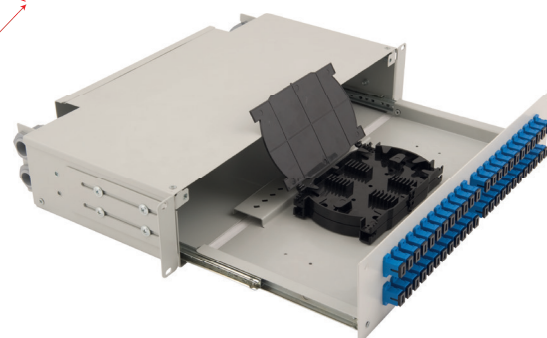
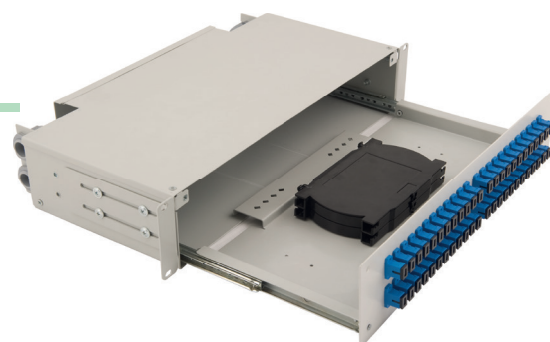
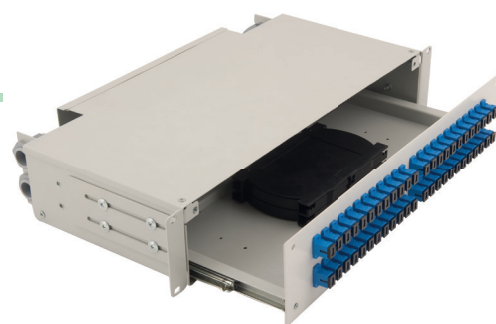


RailSlide

2RU Fiber Termination Patch/Splice Panel

The RailSlide 2RU Fiber Termination Patch/Splice Panel is designed for use as a rack mount interconnect point where termination and connectivity of up to 96 fibers is desired. This solution allows for easy access to the front patch cords as well as the splice trays and pigtails after being pulled out. Mounted on telescopic runners to ensure the tray slides in and out with a smooth action. Standard panels are available empty for complete field configuration, half-loaded with adaptor plates for field termination and cable assembly installation, or stubbed with a factory-installed cable assembly of a user specified length. The panel also offers multiple cable entry solutions, up to 4 standard cable entry points for, loose tube, tight buffer, preterminated and steel tape armoured cable. Each panel has integrated strength member tie positions.



Features

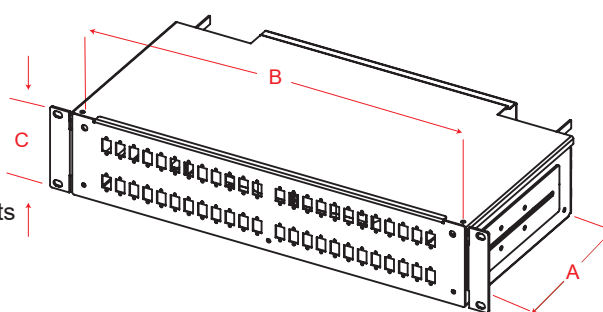
- ✓ Accepts loose tube, distribution and pre terminated cables
- ✓ Changeable adaptor panels
- ✓ Snap Latches for fixing the tray
- ✓ Pulled-open front pulled-out tray
- ✓ Optional splice tray kit for on site conversion to patch and splice panel

Specifications

- ✓ Cold Rolled Steel
- ✓ Durable textured powder coat finish available in black or white
- ✓ Universal 19/21" EIA/TIA rack compatibility
- ✓ Front and back side mounting options
- ✓ Standard cable stub location is left/right side

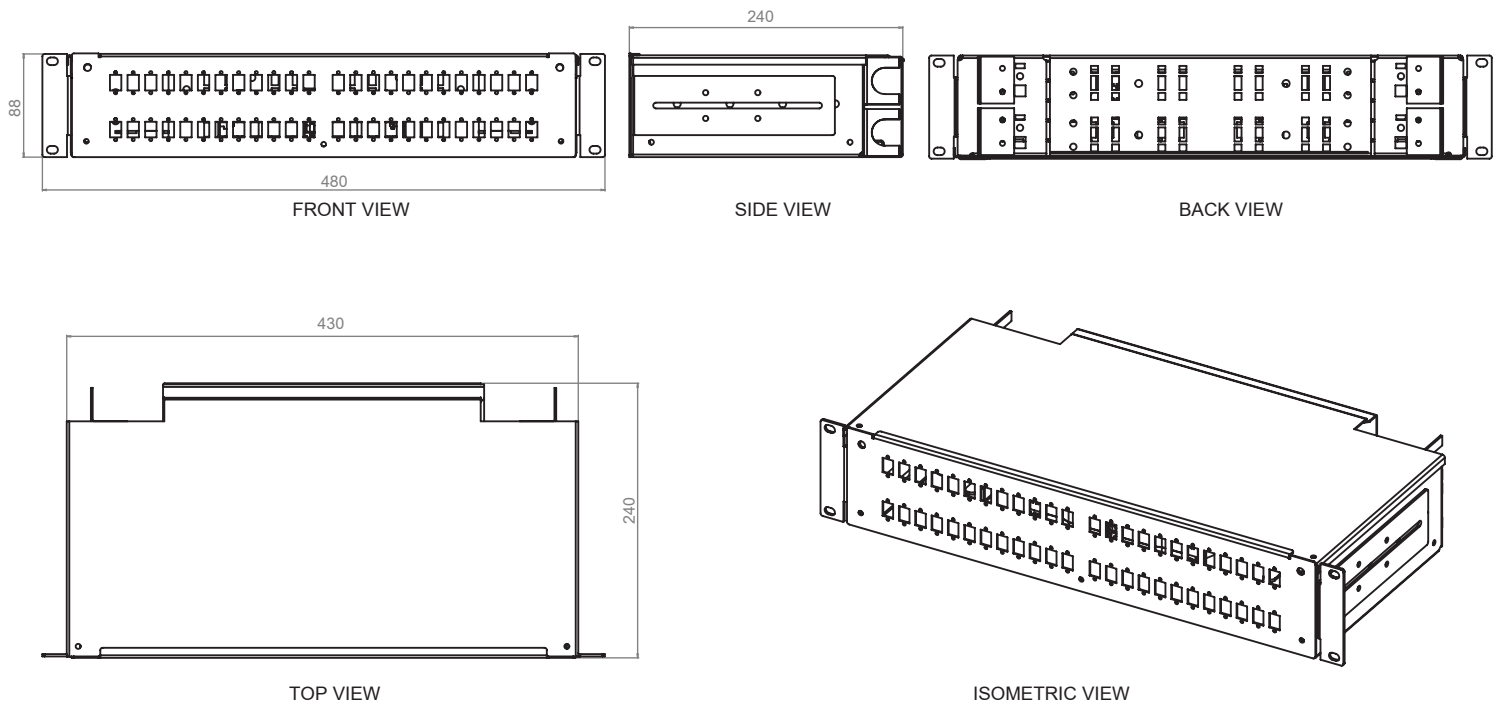
Applications

- ✓ Telecommunications closets
- ✓ Data Centers
- ✓ Customer Premise
- ✓ LAN / WAN Networks
- ✓ Central Offices / Headends
- ✓ Hubs / Cabinets / Remote Terminals
- ✓ FTTH / FTTB Networks

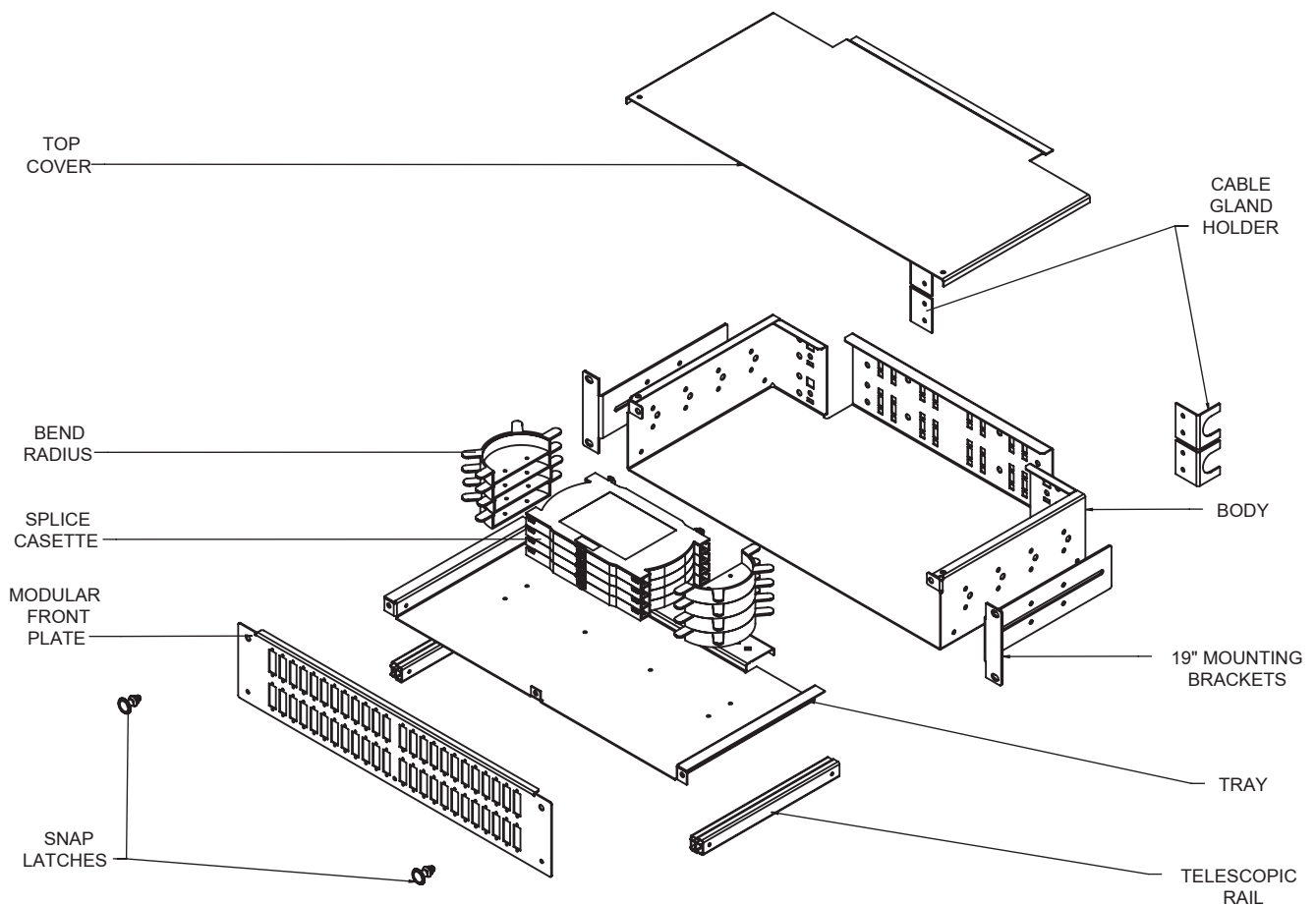


Dimensions

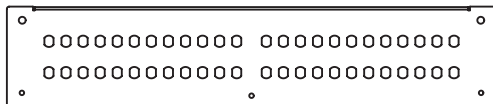
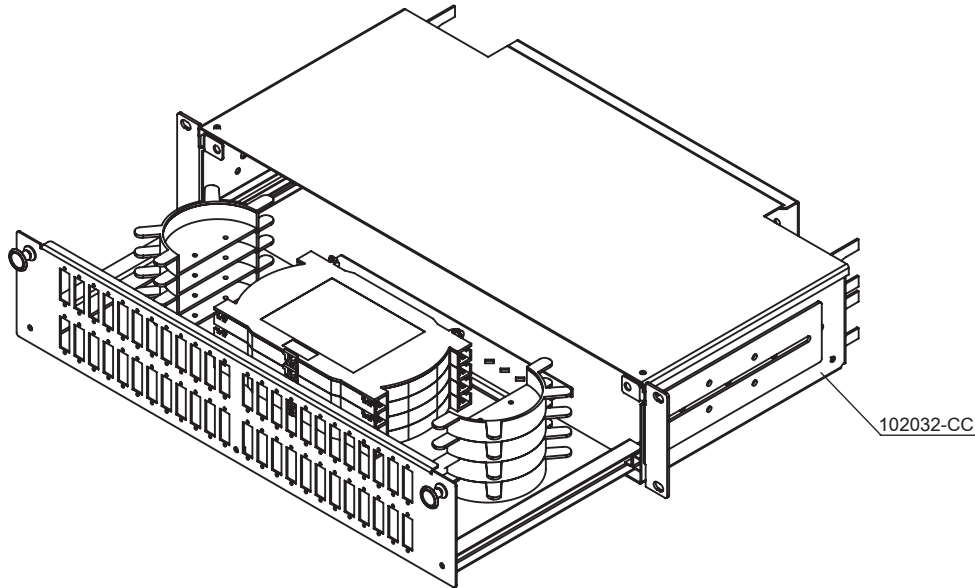
DEPTH A (mm)	WIDTH B (mm)	HEIGHT C (mm)	RACK UNITS	CAPACITY	UNLOADED WEIGHT
240	430	88	2	48/96	4,2 kg



EXPLODED VIEW



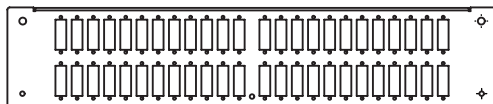
Order No*	Product Definition
102032-CC	RailSlide 2RU Fibre Optic Termination Panel,19"- Sliding with Telescopic Rails, without front plate, Colour: Black-RAL9005 or Light Grey-RAL7035, (2pcs. PG16 Plastic Gland, 2pcs. 50 cm Plastic Spiral Tube Ø13mm, 8pcs. 2,5mmX10 Cable Ties, 2pcs. Plastic Snap Latches, 8pcs. Plastic Half Round Spools for Bend Radius)



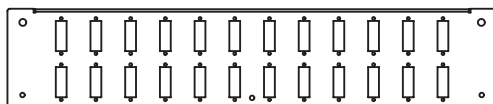
48 ST or 48 FC (D-Hole) 2RU Front Plate



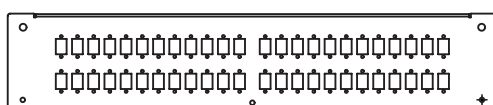
24 ST or 24 FC (D-Hole) 2RU Front Plate



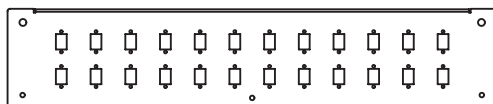
48 SC Duplex Vertical 2RU Front Plate



24 SC Duplex Vertical 2RU Front Plate



48 LC Duplex or 48 E2000 or 48 SC Simplex Vertical 2RU Front Plate



24 LC Duplex or 24 E2000 or 24 SC Simplex Vertical 2RU Front Plate

Order No*	RailSlide 2RU Front Plate Options
102032.01-CC	48 ST or 48 FC (D-hole) 2RU Front Plate
102032.02-CC	24 ST or 24 FC (D-hole) 2RU Front Plate
102032.03-CC	48 SC Duplex Vertical 2RU Front Plate
102032.04-CC	24 SC Duplex Vertical 2RU Front Plate
102032.05-CC	48 LC Duplex or 48 E2000 Simplex or 48 SC Simplex 2RU Front Plate
102032.06-CC	24 LC Duplex or 24 E2000 Simplex or 24 SC Simplex 2RU Front Plate

Ordering Information

* CC=LG for Light Grey RAL 7035 & BL for Black RAL 9005 for customers to define while ordering.