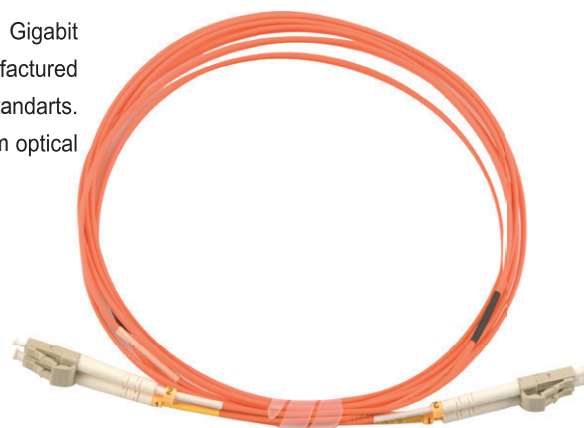


Patch Cords

For Data Environments

Multimode Patch Cords are used to connect high speed and legacy network like Gigabit Ethernet, Fast Ethernet and Ethernet. Our multimode Patch Cords are manufactured using LSZH and PVC cables which conform to IEC, EIA, TIA and Telecordia standards. OM2 Patch Cords are terminated with our standard connector which gives optimum optical performance.

50/125 (OM2)



Features

- ✓ SC, LC, ST and FC connectors
- ✓ LSZH or PVC orange colour cable
- ✓ 900µm tight buffer
- ✓ OM2 fibre conforms to ITU-T G.651.1, TIA/EIA 492AAAB, IEC60793-2-10
- ✓ Simplex and duplex assemblies
- ✓ Duplex assemblies available with clips (SC and LC)
- ✓ Different connector performance range for specific application

Applications

- ✓ For use in 1 Gb/s high speed LAN networks over a 550 m indicative link length at 850 nm wavelength using a laser launch
- ✓ High speed and legacy networks including Gigabit Ethernet, Fast Ethernet and Ethernet
- ✓ Data centers
- ✓ Premises cabling in data networks including backbone, riser and horizontal
- ✓ Support video, data and voice services

Connector Specification

Optical Performance	Singlemode	Conformance
IL Max/Master (Acceptance)	0.25 dB	IEC 61300-3-4
Ave/Master	0.15 dB	IEC 61300-3-4

Fibre Specification

Characteristics	
Attenuation (dB) / km	2.8 @ 850nm / 0.8 @ 1300nm
Bandwidth OFL (MHz x km)	500 @ 850nm / 500 @ 1300nm

Cable Specification

Characteristics	Simplex	Duplex
Cable Material	LSZH and PVC	LSZH and PVC
Strength Member	Aramid	Aramid
Crush (N)	1000	1000
Operating Temperature (°C)	-20 to 60	-20 to 60
Fire Specification	IEC 60332-1	



For part number generator see page 12