

OptiBox Medium

Wall Mount Fiber Termination Patch/Splice Box

The Alfafonet's OptiBox Medium Fiber Termination Patch/Splice Box is designed for use as a wall mount interconnect point where termination and connectivity of up to 48 fibers is desired. This solution allows easy access to patch cords and pigtails after opening the hinged front door. Standard boxes are available empty for complete field configuration, half-loaded with adaptor plates for field termination and cable assembly installation, or stubbed with a factory-installed cable assembly of a user specified length.

Features

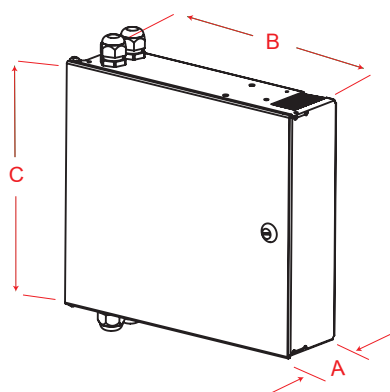
- ✓ Fits comfortably into new and existing interconnect, cross-connect, customer premise, and co-location environments
- ✓ Most common connector styles and types available
- ✓ Compatible with industry standard equipment frames
- ✓ Single door with tube-style keyed lock for flexibility and security
- ✓ Optional magnetic lock
- ✓ Optional splice tray kit for on site conversion to patch and splice panel

Specifications

- ✓ Cold rolled steel
- ✓ Durable textured powder coat finish available in black or white
- ✓ Easy changeable adaptor plates
- ✓ Standard density: up to 24 fiber, High density: up to 48 fiber
- ✓ Standard cable stub location is bottom
- ✓ Optional splice trays for splitters

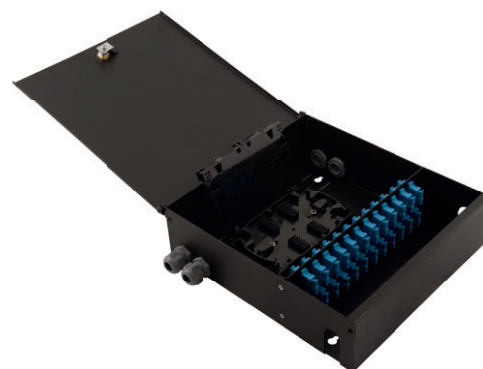
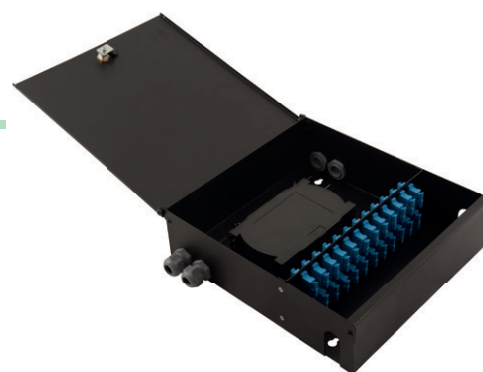
Applications

- ✓ Telecommunications closets
- ✓ HUB/OTN Sites
- ✓ Customer premise
- ✓ Co-Location sites
- ✓ Campus/enterprise environments
- ✓ FTTH / FTTB Networks



Dimensions

DEPTH A (mm)	WIDTH B (mm)	HEIGHT C (mm)	RACK UNITS	CAPACITY	UNLOADED WEIGHT
88	320	290	-	24/48	2,8 kg



OptiBox Medium

Wall Mount Fiber Termination Patch/Splice Box

The Alfafonet's OptiBox Medium Fiber Termination Patch/Splice Box is designed for use as a wall mount interconnect point where termination and connectivity of up to 48 fibers is desired. This solution allows easy access to patch cords and pigtails after opening the hinged front door. Standard boxes are available empty for complete field configuration, half-loaded with adaptor plates for field termination and cable assembly installation, or stubbed with a factory-installed cable assembly of a user specified length.

Features

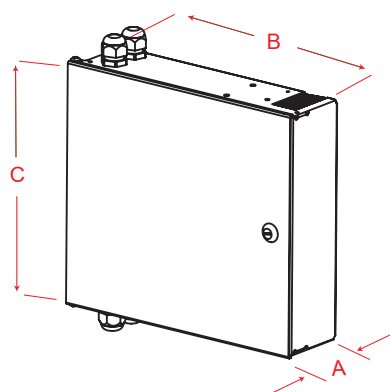
- ✓ Fits comfortably into new and existing interconnect, cross-connect, customer premise, and co-location environments
- ✓ Most common connector styles and types available
- ✓ Compatible with industry standard equipment frames
- ✓ Single door with tube-style keyed lock for flexibility and security
- ✓ Optional magnetic lock
- ✓ Optional splice tray kit for on site conversion to patch and splice panel

Specifications

- ✓ Cold rolled steel
- ✓ Durable textured powder coat finish available in black or white
- ✓ Easy changeable adaptor plates
- ✓ Standard density: up to 24 fiber, High density: up to 48 fiber
- ✓ Standard cable stub location is bottom
- ✓ Optional splice trays for splitters

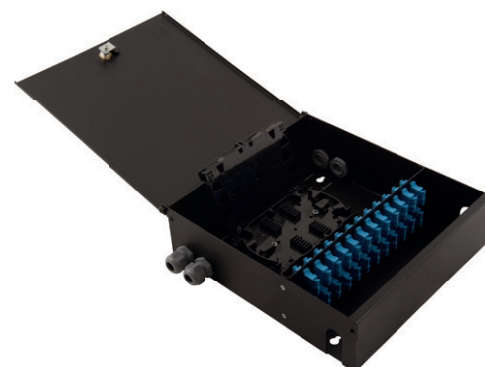
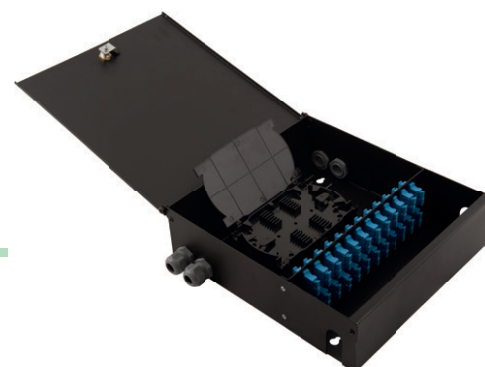
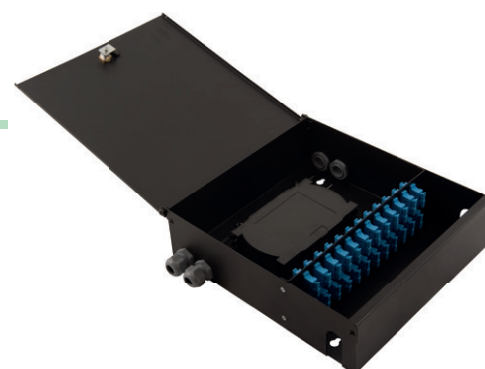
Applications

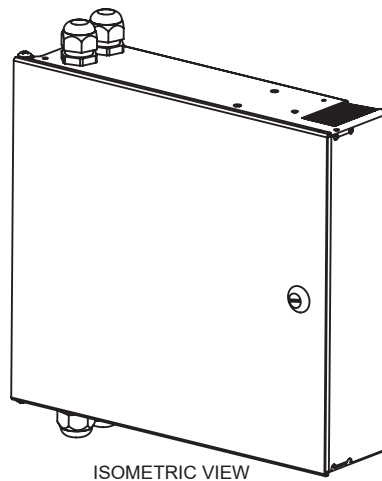
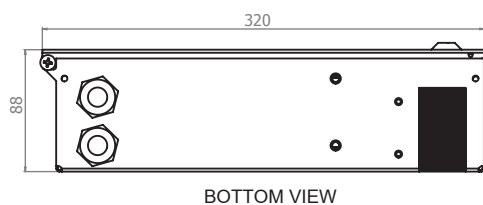
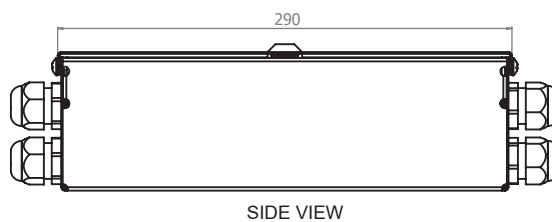
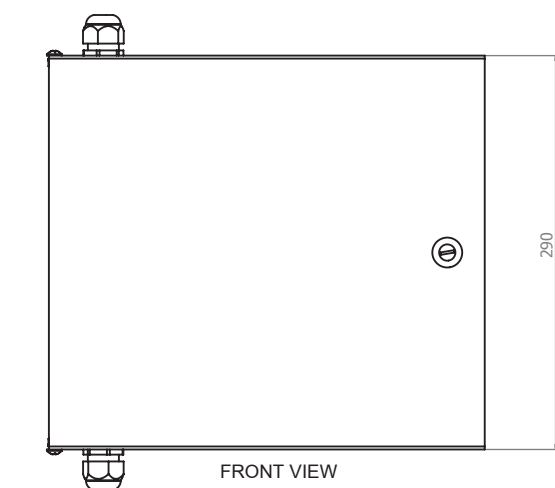
- ✓ Telecommunications closets
- ✓ HUB/OTN Sites
- ✓ Customer premise
- ✓ Co-Location sites
- ✓ Campus/enterprise environments
- ✓ FTTH / FTTB Networks



Dimensions

DEPTH A (mm)	WIDTH B (mm)	HEIGHT C (mm)	RACK UNITS	CAPACITY	UNLOADED WEIGHT
88	320	290	-	24/48	2,8 kg





EXPLODED VIEW

