

FH-TO Enclosure

Tap-off enclosure for Mini-Breakout riser cable

FH-TO is an enclosure to cover the incision in the Mini-Breakout cable with 12 and 24 fibers.

As Mini-Breakout cable allows to retract specific fiber from the cable at each floor, FH-TO provide a safety space for tapping off fibers from Mini-Breakout cable and protects the transition.

Features

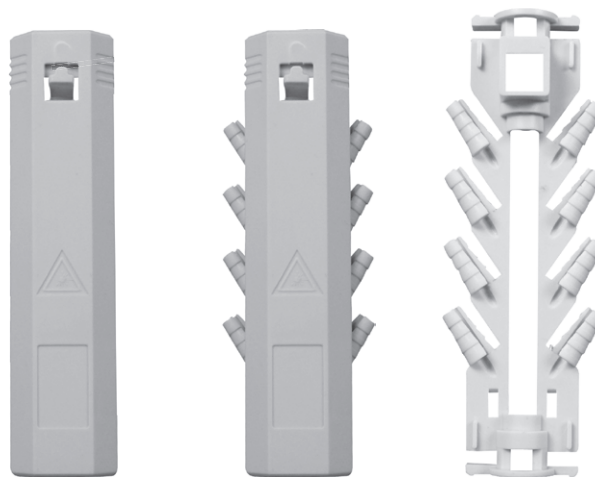
- ✓ Very compact size
- ✓ Capacity to tap off at least 8 fibers (4left/4right)
- ✓ Restores the integrity of Mini-Breakout cable after making an incision for fiber access
- ✓ Mini-Breakout cable incision of only 55 mm
- ✓ Designed for indoor use
- ✓ Flame retardant LSZH material
- ✓ Front accessible

Kit Contents

Base
Cover
Cable fixation accessories

Accessories

- ✓ Fiber guiding tubing
- ✓ Tubing fixation booth



For more technical options and order quantity information, please contact sales department

TB-GPX FTTH Termination Box

TB-GPX Termination Box is designed for use in residential and business applications for the termination of up to four fibers. The wall box enables the installation of either a single Blown Tube cable using up to a 4 fiber blown unit or two 2 fiber ruggedised cables to be spliced to four SC pigtails (PC or APC), which connect to adaptors at the base of the unit. The unit can be quickly installed within an office, house or communication room environment.

Features

- ✓ Ergonomic design
- ✓ Ability to allow cables to enter from rear or bottom of the unit
- ✓ All fibers are positively managed to maintain a 30mm minimum bend radius
- ✓ Optional Removable rear entry cable management
- ✓ Flip tray to allow access to pigtails and cable entry
- ✓ Compact, low profile, wall mounted unit used for small and large business premises
- ✓ Removable cover for easy access
- ✓ Flame retardant LSZH material
- ✓ Patchcords exit unit on bottom face and are protected by two protection covers
- ✓ Standard color white. Other colors available on request

Kit Contents

The TB-GPX Termination Box is supplied with all of the components required to complete the installation of one Blown Fibre input cable, 4 splice protectors are supplied in the kit

Optional Items

(if required as separate items)

- ✓ Patchcords
- ✓ Adaptors
- ✓ Pigtails
- ✓ Security Screw Kit

Technical Data

- ✓ Number of input cable ports:1
- ✓ Maximum input cable diameter (mm):10mm
- ✓ Maximum Capacity: 4 Fibers
- ✓ Maximum no. of customer feeds: 4 Patchcords
- ✓ Required space envelope (mm):(l) 80 x (w) 120 x (d) 25
- ✓ Operating temperature:-20oC to + 50oC (5 to 95% RH)



Specifications & Ordering Information

Order No	Dimensions LxWxH(mm)	Cable Ports	Spliced Fiber Storage Capacity	Adaptor Capacity
ALF-TB-GPX	80x120x25	1 Cable ports (for cable with max diameter 10 mm)	4 Splices	2 SC Duplex Adaptors