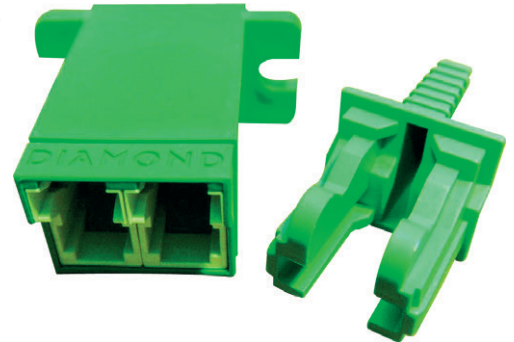


# E2000 ADAPTORS

Alfafonet offers a range of high quality E2000 adaptors which have high precision alignment sleeves for reliability and better reconnectability. Each E2000 connector has an inbuilt mechanism to open the shutter and guide the ferrule in the alignment sleeve. E2000 adaptors come with a ceramic sleeves for the singlemode and phosphor bronze or ceramic sleeves for the multimode. The housing is available in different colours and a flangeless body option.



## Features

- ✓ Complies with IEC 61754-15
- ✓ High precision alignment sleeve
- ✓ Low insertion loss and high reconnectability
- ✓ Narrow key, 2.06 mm for APC and UPC connectors
- ✓ APC and UPC connectors
- ✓ Available in simplex only

## Applications

- ✓ Suitable for high power laser applications
- ✓ Telecommunications networks
- ✓ WDM, DWDM applications
- ✓ Testing and measurement equipment

## Technical Specification

Optical Performance	Ceramic	Phosphor Bronze	Conformance
Insertion Loss (Typ)	0.1dB	0.15 dB	IEC 61300-3-4
Mating Durability	500		IEC 61300-2-2
Receptacle Retention Force	2N - 5.9N		IEC 61754-20
Operating Temperature	-25 to + 70°C, 12 Cycles		IEC 61300-2-22