

DC-220 Fiber Optic Dome Closure

Features

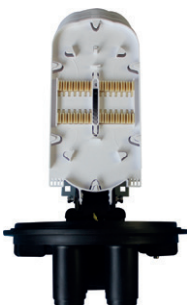
- ✓ May be used for cut, uncut and taut sheath applications
- ✓ May be used for all fiber optic cable
- ✓ Sheath retention & central strength member fasten system included
- ✓ Closure construction and lightweight plastic provides strength and resistance to chemical and U.V attack
- ✓ Installation and re-entry with a minimum of tools
- ✓ All hardware are included
- ✓ Protection class: IP68
- ✓ RoHS compliance

Application

Underground, Aerial, Vault, Pole Mounting and Wall Mounting



DC-220A-BC6



DC-220B-BC6



DC-220C-BC6



DC-220D-BD6



DC-220E-BD6



Drop cable sealing

Specifications & Ordering Information

Order No	Dimensions(mm) HeightxDiameter	Spliced Fiber Storage Capacity (Single Fusion)	Cable Ports	Max. Diameter of Cable(mm)	Splice Trays
ALF-DC-220A-BC6	488x285	288 splices (Single Fusion)	1 oval port 6 round ports	1 oval port for 1 looped cable with max 30 mm 6 round ports: each port for 1 cable with max 30 mm or each port for 8 drop cables with max 6 mm	12 X Tray 204A (Capacity:24 Splices)
ALF-DC-220B-BC6					12 X Tray 204B (Capacity:24 Splices)
ALF-DC-220C-BC6					12 X Tray 204C (Capacity:24 Splices)
ALF-DC-220D-BD6	566x285	288 splices (Single Fusion) 864 splices (mass fusion, ribbon)			12 X Tray 102A (Capacity:24 Splices)
ALF-DC-220E-BD6		288 splices (Single Fusion)			12 X Tray 102B (Capacity:24 Splices)